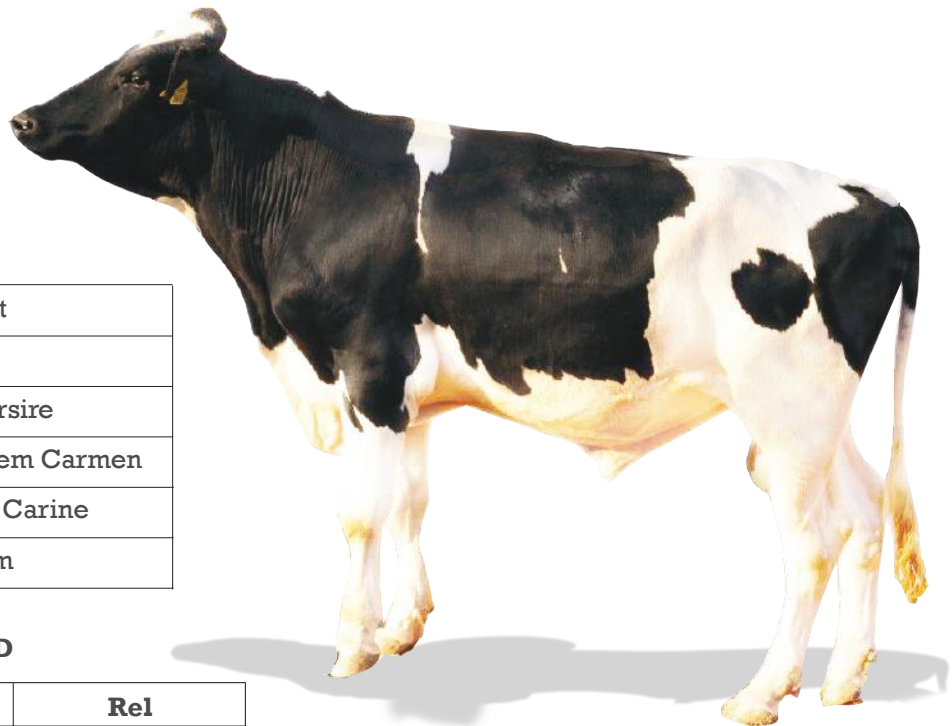


# IMPORTED HF

## HF-40116

BOVI-DENMARK



SIRE NAME	Cogent Supershot
PGD	Rose Superclass
PGS	Seagull Bay Supersire
DAM NAME	Anderstrup Bookem Carmen
MGD	Anderstrup Mom Carine
MGS	De Su 521 Bookem

### EBV IN KGS BASED ON 2005 RECORD

Milk	Fat	Protein	Rel
2386	75	78	-
Feeding Efficiency	Productive Life	SCS	Beta Casein
+177	+6.8	2.75	A1A2
DPR	HCR	CCR	Fertility Index
+2.3	+0.8	+3.1	+2.2

### DAM'S BEST LACTATION DETAILS

Milk yield (Kg)	Avg Milk fat (%)	Total Milk fat(Kgs)	Avg Milk Protein (%)	Total Milk Protein (kgs)
18162	4.97	902	3.37	610
Type of traits	Frame	Legs	Udder	Total
EBV	128	110	118	
Classific	85	81	92	88

LINEAR	-2	-1	0	1	2
Stature					0.31 T
Dairy Form					0.36 O
Strength					0.69 S
Body Depth					0.32 D
Rump Width					0.53 W
Rump Angle					0.20 S
Legs Side View					0.57 S
Legs Rear View					0.71 S
Foot Angle					0.53 S
Feet And Legs Score					0.89 H
Fore Udder Attachment					1.31 S
Rear Udder Height					1.29 H
Rear Udder Width					1.19 W
Udder Cleft					0.79 S
Udder Depth					0.43 S
Front Teat Placement					0.36 C
Rear Teat Placement					0.50 C
Teat Length					0.94 L

# HF-40128 BOVI-DENMARK

SIRE NAME	Stansons Casual	DAM NAME	003723-05778
PGD	Stantons Freddie Cameo	MGD	Anderstrup Super Gisi
PGS	Generations Epic	MGS	Delta G Force

### EBV IN KGS BASED ON 2005 RECORD

Milk	Fat	Protein	Rel
1739	44	56	-
<b>Feeding Efficiency</b>	<b>Productive Life</b>	<b>SCS</b>	<b>Beta Casein</b>
+64	+5.8	2.98	-
<b>DPR</b>	<b>HCR</b>	<b>CCR</b>	<b>Fertility Index</b>
+2.7	+0.7	+3.8	+2.5

### DAM'S BEST LACTATION DETAILS

Milk yield (Kg)	Avg Milk fat (%)	Total Milk fat(Kgs)	Avg Milk Protein (%)	Total Milk Protein (kgs)
16318	4.03	658	3.18	520
<b>Type of traits</b>	<b>Frame</b>	<b>Legs</b>	<b>Udder</b>	<b>Total</b>
EBV	109	121	110	-
Classific	-	-	-	-



LINEAR	-2	-1	0	1	2
Stature					2.37 T
Dairy Form					0.48 O
Strength					0.34 S
Body Depth					0.03 S
Rump Width					0.89 W
Rump Angle					1.65 S
Legs Side View					1.17 P
Legs Rear View					1.73 S
Foot Angle					2.67 S
Feet And Legs Score					2.38 H
Fore Udder Attachment					2.24 S
Rear Udder Height					2.24 H
Rear Udder Width					2.06 W
Udder Cleft					0.51 S
Udder Depth					2.71 S
Front Teat Placement					0.27 W
Rear Teat Placement					0.37 W
Teat Length					0.41 S



LINEAR	-2	-1	0	1	2
Stature					0.31 S
Dairy Form					0.97 T
Strength					0.49 F
Body Depth					1.12 S
Rump Width					0.75 N
Rump Angle					0.34 S
Legs Side View					0.55 P
Legs Rear View					1.85 S
Foot Angle					0.12 L
Feet And Legs Score					1.96 H
Fore Udder Attachment					0.47 L
Rear Udder Height					1.50 H
Rear Udder Width					0.93 W
Udder Cleft					0.56 S
Udder Depth					1.24 S
Front Teat Placement					0.57 W
Rear Teat Placement					0.51 W
Teat Length					0.69 S

# HF-50060 BOVI-DENMARK

SIRE NAME	VA Tristad Bookem Barkley	DAM NAME	046577-03332
PGD	Tristad Gibor Netto	MGD	046577-02971
PGS	De-Su 521 Bookem-ET	MGS	VH Lynggarden Onside Op

### EBV IN KGS BASED ON 2005 RECORD

Milk	Fat	Protein	Rel
1545	32	50	-
<b>Feeding Efficiency</b>	<b>Productive Life</b>	<b>SCS</b>	<b>Beta Casein</b>
-	+3.6	2.76	-
<b>DPR</b>	<b>HCR</b>	<b>CCR</b>	<b>Fertility Index</b>
+0.1	+1.8	+1.9	+0.7

### DAM'S BEST LACTATION DETAILS

Milk yield (Kg)	Avg Milk fat (%)	Total Milk fat(Kgs)	Avg Milk Protein (%)	Total Milk Protein (kgs)
14467	3.49	506	3.41	493
<b>Type of traits</b>	<b>Frame</b>	<b>Legs</b>	<b>Udder</b>	<b>Total</b>
EBV	100	98	106	-
Classific	82	79	79	80



LINEAR	-2	-1	0	1	2
Stature					
Dairy Form					
Strength					
Body Depth					
Rump Width					
Rump Angle					
Legs Side View					
Legs Rear View					
Foot Angle					
Feet And Legs Score					
Fore Udder Attachment					
Rear Udder Height					
Rear Udder Width					
Udder Cleft					
Udder Depth					
Front Teat Placement					
Rear Teat Placement					
Teat Length					

# HF-50054 BOVI-DENMARK

SIRE NAME	A H Vitesse	DAM NAME	038000-04886
PGD	Delta Rosanna	MGD	038000-03958
PGS	Delta Gravity	MGS	VH Mantylan Fibrax Fanta

### EBV IN KGS BASED ON 2005 RECORD

Milk	Fat	Protein	Rel
1156	67	58	-
<b>Feeding Efficiency</b>	<b>Productive Life</b>	<b>SCS</b>	<b>Beta Casein</b>
-	+1.6	3.00	-
<b>DPR</b>	<b>HCR</b>	<b>CCR</b>	<b>Fertility Index</b>
+2.7	-	-	-

### DAM'S BEST LACTATION DETAILS

Milk yield (Kg)	Avg Milk fat (%)	Total Milk fat(Kgs)	Avg Milk Protein (%)	Total Milk Protein (kgs)
14443	4.35	629	3.58	517
<b>Type of traits</b>	<b>Frame</b>	<b>Legs</b>	<b>Udder</b>	<b>Total</b>
EBV	122	102	108	-
Classific	78	82	80	80

# HF-40118 BOVI-DENMARK

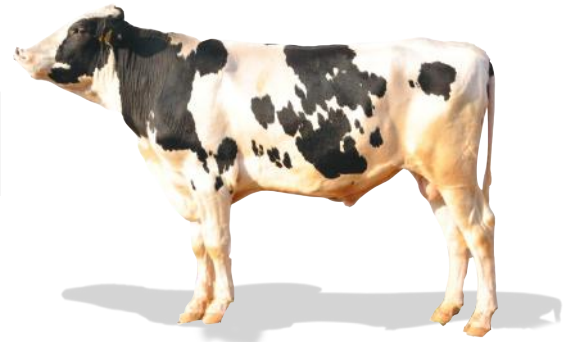
SIRE NAME	VH Anderstrup Bookem Boogie	DAM NAME	041082-02716
PGD	Stansons Freddie Cameo	MGD	041082-02480
PGS	De Su 521 Bookem	MGS	VH Planet Peder

### EBV IN KGS BASED ON 2005 RECORD

Milk	Fat	Protein	Rel
833	27	44	-
Feeding Efficiency	Productive Life	SCS	Beta Casein
-	-	-	-
DPR	HCR	CCR	Fertility Index
-	-	-	-

### DAM'S BEST LACTATION DETAILS

Milk yield (Kg)	Avg Milk fat (%)	Total Milk fat(Kgs)	Avg Milk Protein (%)	Total Milk Protein (kgs)
14237	4.07	579	3.18	453
Type of traits	Frame	Legs	Udder	Total
EBV	107	104	98	-
Classific	88	85	86	88



LINEAR	-2	-1	0	1	2
Stature					0.97 T
Dairy Form					1.28 O
Strength					0.76 S
Body Depth					0.62 D
Rump Width					0.61 W
Rump Angle					0.03 S
Legs Side View					1.07 S
Legs Rear View					1.65 S
Foot Angle					0.83 S
Feet And Legs Score					1.44 H
Fore Udder Attachment					1.77 S
Rear Udder Height					2.02 H
Rear Udder Width					1.86 W
Udder Cleft					0.72 S
Udder Depth					0.89 S
Front Teat Placement					0.61 C
Rear Teat Placement					0.51 C
Teat Length					0.73 L



LINEAR	-2	-1	0	1	2
Stature					0.12 S
Dairy Form					0.20 O
Strength					1.07 F
Body Depth					1.31 S
Rump Width					0.14 N
Rump Angle					0.43 H
Legs Side View					1.04 S
Legs Rear View					0.62 H
Foot Angle					0.56 L
Feet And Legs Score					0.20 L
Fore Udder Attachment					1.12 S
Rear Udder Height					2.41 H
Rear Udder Width					2.22 W
Udder Cleft					1.02 S
Udder Depth					1.58 S
Front Teat Placement					0.54 C
Rear Teat Placement					0.51 C
Teat Length					1.11 S

# HF-40125 BOVI-DENMARK

SIRE NAME	S S I Tape OverBay	DAM NAME	052039-03642
PGD	Our Favorite Oakillanee	MGD	051814-03116
PGS	Pine Tree Brianne Tape	MGS	De-Su Freddie Denim 646

### EBV IN KGS BASED ON 2005 RECORD

Milk	Fat	Protein	Rel
1221	67	50	-
Feeding Efficiency	Productive Life	SCS	Beta Casein
+89	+4.6	2.66	-
DPR	HCR	CCR	Fertility Index
+1.4	+2.4	+1.6	+1.6

### DAM'S BEST LACTATION DETAILS

Milk yield (Kg)	Avg Milk fat (%)	Total Milk fat(Kgs)	Avg Milk Protein (%)	Total Milk Protein (kgs)
14136	3.75	530	3.3	466
Type of traits	Frame	Legs	Udder	Total
EBV	110	98	102	-
Classific	71	80	80	77



LINEAR	-2	-1	0	1	2
Stature					
Dairy Form					
Strength					
Body Depth					
Rump Width					
Rump Angle					
Legs Side View					
Legs Rear View					
Foot Angle					
Feet And Legs Score					
Fore Udder Attachment					
Rear Udder Height					
Rear Udder Width					
Udder Cleft					
Udder Depth					
Front Teat Placement					
Rear Teat Placement					
Teat Length					

# DE 03 577 95193 WENDLAND HOLSTEINS

SIRE NAME	Esperado P	DAM NAME	WEH Ji 194
PGD	Perky	MGD	WEH Ja 106
PGS	Epic	MGS	Bronco

### EBV IN KGS BASED ON 2005 RECORD

Milk	Fat	Protein	Rel
1426	28	44	-
Feeding Efficiency	Productive Life	SCS	Beta Casein
-	-	-	-
DPR	HCR	CCR	Fertility Index
-	-	-	-

### DAM'S BEST LACTATION DETAILS

Milk yield (Kg)	Avg Milk fat (%)	Total Milk fat(Kgs)	Avg Milk Protein (%)	Total Milk Protein (kgs)
14116	4.36	616	3.49	492
Type of traits	Frame	Legs	Udder	Total
EBV	-	-	-	-
Classific	-	-	-	-



## HF-50047 BOVI-DENMARK

SIRE NAME	Sandy Valley Blind Side	DAM NAME	037044-05665
PGD	Sandy Valley Mano Brydan	MGD	037044-04177
PGS	S-S-I Domain Lithium	MGS	VH Lykousminde Mascol Max

### EBV IN KGS BASED ON 2005 RECORD

Milk	Fat	Protein	Rel
1803	37	56	--
Feeding Efficiency	Productive Life	SCS	Beta Casein
58	2.3	2.92	-
DPR	HCR	CCR	Fertility Index
2	2.6	2.7	2.2

LINEAR	-2	-1	0	1	2
Stature					1.17 T
Dairy Form					0.44 S
Strength					-0.16 S
Body Depth					-0.32 T
Rump Width					-0.52 H
Rump Angle					0.96 W
Legs Side View					-0.07 P
Legs Rear View					0.61 S
Foot Angle					0.97 S
Feet And Legs Score					1.16 H
Fore Udder Attachment					1.27 S
Rear Udder Height					1.42 H
Rear Udder Width					1.31 W
Udder Cleft					1.36 S
Udder Depth					1.87 S
Front Teat Placement					0.31 C
Rear Teat Placement					0.41 C
Teat Length					0.18 L

### DAM'S BEST LACTATION DETAILS

Milk yield (Kg)	Avg Milk fat (%)	Total Milk fat(Kgs)	Avg Milk Protein (%)	Total Milk Protein (kgs)
13300	3.78	502	3.38	450
Type of traits	Frame	Legs	Udder	Total
EBV	106	107	109	-
Classific	84	82	87	86

## HF-50051 BOVI-DENMARK

SIRE NAME	VH Bertel Brandal	DAM NAME	081191-03633
PGD	025192-02274	MGD	081191-02932
PGS	VH Bissjon Skararp Bertel	MGS	Dansire Ramos Redding

### EBV IN KGS BASED ON 2005 RECORD

Milk	Fat	Protein	Rel
1803	52	54	-
Feeding Efficiency	Productive Life	SCS	Beta Casein
-	-	-	-
DPR	HCR	CCR	Fertility Index
-	-	-	-

### DAM'S BEST LACTATION DETAILS

Milk yield (Kg)	Avg Milk fat (%)	Total Milk fat(Kgs)	Avg Milk Protein (%)	Total Milk Protein (kgs)
12912	3.54	457	3.32	428
Type of traits	Frame	Legs	Udder	Total
EBV	103	97	104	-
Classific	80	79	76	78



## DE 14 047 60865 MLSNIA HOLSTEINS

SIRE NAME	Kanu P	DAM NAME	RR Reg 543
PGD	Kanu	MGD	RR Reg 990
PGS	Colt-P	MGS	Man-O-Man

### EBV IN KGS BASED ON 2005 RECORD

Milk	Fat	Protein	Rel
+2363	29	53	-
Feeding Efficiency	Productive Life	SCS	Beta Casein
-56	4.6	2.73	-
DPR	HCR	CCR	Fertility Index
0.8	-0.7	-1	0.2

### DAM'S BEST LACTATION DETAILS

Milk yield (Kg)	Avg Milk fat (%)	Total Milk fat(Kgs)	Avg Milk Protein (%)	Total Milk Protein (kgs)
12473	4.33	540	3.54	441
Type of traits	Frame	Legs	Udder	Total
EBV	-	-	-	-
Classific	-	-	-	-

LINEAR	-2	-1	0	1	2
Stature					+0.92 T
Dairy Form					-0.11 F
Strength					-0.83 S
Body Depth					-0.91 T
Rump Width					+1.32 S
Rump Angle					-0.50 N
Legs Side View					-0.81 P
Legs Rear View					+1.19 S
Foot Angle					+1.22 S
Feet And Legs Score					+1.40H
Fore Udder Attachment					+1.82 S
Rear Udder Height					+1.58 H
Rear Udder Width					+1.45 W
Udder Cleft					+0.12 S
Udder Depth					+2.23 S
Front Teat Placement					+0.05 C
Rear Teat Placement					+0.19 C
Teat Length					+1.29 L

# IMPORTED JERSEY

## JY-50062

BOVI-DENMARK



SIRE NAME	Buttercrest Galvanize
PGD	Buttercrest Jevron Galveston
PGS	All Lyns Loie Valentino
DAM NAME	036483-03754
MGD	036483-01741
MGS	Holyland Lillybet's Legacy

### EBV IN KGS BASED ON 2005 RECORD

Milk	Fat	Protein	Rel
1871	41	62	-
Feeding Efficiency	Productive Life	SCS	Beta Casein
-	+1.8	3.05	A1A2
DPR	HCR	CCR	Fertility Index
-4.4	-2.3	-4.9	-

### DAM'S BEST LACTATION DETAILS

Milk yield (Kg)	Avg Milk fat (%)	Total Milk fat(Kgs)	Avg Milk Protein (%)	Total Milk Protein (kgs)
11045	5.85	646	4.06	449
Type of traits	Frame	Legs	Udder	Total
EBV	111	106	99	
Classific	80	85	82	83

LINEAR	-2	-1	0	1	2
Stature					1.1 T
Strength					0.5 S
Dairy Form					0.8 O
Rump Angle					1.7 S
Rump Width					0.4 W
Rear Legs					0.5 P
Foot Angle					0.6 S
Fore Udder Attachment					1.0 S
Rear Udder Height					1.2 H
Rear Udder Width					0.9 W
Udder Cleft					0.3 S
Udder Depth					0.8 S
Teat Placement					0.2 C
Teat Length					0.3 L
Rear Teat Placement Rear View					0
Rear Teat Placement Side View					0



## JY-40138 BOVI-DENMARK

SIRE NAME	VJ Link	DAM NAME	019903-04432
PGD	Langa Hlrse Donna II	MGD	019903-04063
PCS	Hollylane Lillibets legacy	MGS	DJ Jason

### EBV IN KGS BASED ON 2005 RECORD

Milk	Fat	Protein	Rel
1024	34	34	96
<b>Feeding Efficiency</b>	<b>Productive Life</b>	<b>SCS</b>	<b>Beta Casein</b>
-	+4.8	2.69	-
<b>DPR</b>	<b>HCR</b>	<b>CCR</b>	<b>Fertility Index</b>
+2.5	+4.0	+4.3	-

### DAM'S BEST LACTATION DETAILS

Milk yield (Kg)	Avg Milk fat (%)	Total Milk fat(Kgs)	Avg Milk Protein (%)	Total Milk Protein (kgs)
10677	5.26	562	4.05	443
<b>Type of traits</b>	<b>Frame</b>	<b>Legs</b>	<b>Udder</b>	<b>Total</b>
EBV	99	100	96	-
Classific	84	77	82	81

LINEAR	-2	-1	0	1	2
Stature					0.1 S
Strength					0.4 F
Dairy Form					0.6 T
Rump Angle					0.4 S
Rump Width					0.1 N
Rear Legs					0.6 P
Foot Angle					0.8 S
Fore Udder Attachment					0.5 L
Rear Udder Height					0.6 L
Rear Udder Width					0.4 N
Udder Cleft					0.2 S
Udder Depth					1.7 S
Teat Placement					0.5 W
Teat Length					0.4 S
Rear Teat Placement Rear View					0
Rear Teat Placement Side View					0

## JY-50063 BOVI-DENMARK

SIRE NAME	VJ Link	DAM NAME	059551-04320
PGD	Langa Hlrse Donna II	MGD	059551-03714
PCS	Hollylane Lillibets legacy	MGS	DJ Holmer

### EBV IN KGS BASED ON 2005 RECORD

Milk	Fat	Protein	Rel
1024	34	34	96
<b>Feeding Efficiency</b>	<b>Productive Life</b>	<b>SCS</b>	<b>Beta Casein</b>
-	+4.8	2.69	-
<b>DPR</b>	<b>HCR</b>	<b>CCR</b>	<b>Fertility Index</b>
+2.5	+4.0	+4.3	-

### DAM'S BEST LACTATION DETAILS

Milk yield (Kg)	Avg Milk fat (%)	Total Milk fat(Kgs)	Avg Milk Protein (%)	Total Milk Protein (kgs)
10096	5.62	567	3.9	394
<b>Type of traits</b>	<b>Frame</b>	<b>Legs</b>	<b>Udder</b>	<b>Total</b>
EBV	115	94	112	-
Classific	84	81	90	88



LINEAR	-2	-1	0	1	2
Stature					0.1 S
Strength					0.4 F
Dairy Form					0.6 T
Rump Angle					0.4 S
Rump Width					0.1 N
Rear Legs					0.6 P
Foot Angle					0.8 S
Fore Udder Attachment					0.5 L
Rear Udder Height					0.6 L
Rear Udder Width					0.4 N
Udder Cleft					0.2 S
Udder Depth					1.7 S
Teat Placement					0.5 W
Teat Length					0.4 S
Rear Teat Placement Rear View					0
Rear Teat Placement Side View					0



## JY-50076 BOVI-DENMARK

SIRE NAME	VJ Kappel Lure Lappe	DAM NAME	019194-05117
PGD	Kaplevgaard May Katrine	MGD	019194-04554
PCS	VJ Lure	MGS	DJ Jante

### EBV IN KGS BASED ON 2005 RECORD

Milk	Fat	Protein	Rel
152	45	29	-
<b>Feeding Efficiency</b>	<b>Productive Life</b>	<b>SCS</b>	<b>Beta Casein</b>
-	-	-	-
<b>DPR</b>	<b>HCR</b>	<b>CCR</b>	<b>Fertility Index</b>
-	-	-	-

### DAM'S BEST LACTATION DETAILS

Milk yield (Kg)	Avg Milk fat (%)	Total Milk fat(Kgs)	Avg Milk Protein (%)	Total Milk Protein (kgs)
10173	5.73	583	4.08	415
<b>Type of traits</b>	<b>Frame</b>	<b>Legs</b>	<b>Udder</b>	<b>Total</b>
EBV	115	101	96	-
Classific	89	86	82	86

LINEAR	-2	-1	0	1	2
Stature					1.0 S
Strength					0.6 F
Dairy Form					0.4 T
Rump Angle					2.1 S
Rump Width					0.9 N
Rear Legs					0.0 S
Foot Angle					0.2 S
Fore Udder Attachment					1.2 L
Rear Udder Height					0.1 L
Rear Udder Width					1.5 N
Udder Cleft					0.5 S
Udder Depth					0.2 S
Teat Placement					0.3 C
Teat Length					0.0 L
Rear Teat Placement Rear View					0
Rear Teat Placement Side View					0



## JY-40156 BOVI-DENMARK

SIRE NAME	VJ Fihl Husky Hihl	DAM NAME	019898-02225
PGD	Sangko	MGD	019898-01847
PCS	VJ Husky	MGS	DJ May

### EBV IN KGS BASED ON 2005 RECORD

Milk	Fat	Protein	Rel
782	51	45	-
<b>Feeding Efficiency</b>	<b>Productive Life</b>	<b>SCS</b>	<b>Beta Casein</b>
-	-	-	-
<b>DPR</b>	<b>HCR</b>	<b>CCR</b>	<b>Fertility Index</b>
-	-	-	-

### DAM'S BEST LACTATION DETAILS

Milk yield (Kg)	Avg Milk fat (%)	Total Milk fat(Kgs)	Avg Milk Protein (%)	Total Milk Protein (kgs)
10077	5.08	512	3.71	374
<b>Type of traits</b>	<b>Frame</b>	<b>Legs</b>	<b>Udder</b>	<b>Total</b>
EBV	107	89	116	-
Classific	77	75	69	70

LINEAR	-2	-1	0	1	2
Stature					1.3T
Strength					0.9S
Dairy Form					0.3O
Rump Angle					0.4S
Rump Width					0.9W
Rear Legs					0.4S
Foot Angle					0.0S
Fore Udder Attachment					0.5S
Rear Udder Height					1.5L
Rear Udder Width					1.2N
Udder Cleft					0.6W
Udder Depth					0.7S
Teat Placement					0.5C
Teat Length					0.1L
Rear Teat Placement Rear View					0
Rear Teat Placement Side View					0

## JY-40146 BOVI-DENMARK

SIRE NAME	VJ Hilario	DAM NAME	018601-02984
PGD	Espe-Holm Impuls Joan	MGD	018601-02662
PCS	Q Hirse	MGS	DJ Bindy

### EBV IN KGS BASED ON 2005 RECORD

Milk	Fat	Protein	Rel
1124	31	43	97
<b>Feeding Efficiency</b>	<b>Productive Life</b>	<b>SCS</b>	<b>Beta Casein</b>
-	+3.6	2.69	-
<b>DPR</b>	<b>HCR</b>	<b>CCR</b>	<b>Fertility Index</b>
+3.6	+3.8	+5.1	-

### DAM'S BEST LACTATION DETAILS

Milk yield (Kg)	Avg Milk fat (%)	Total Milk fat(Kgs)	Avg Milk Protein (%)	Total Milk Protein (kgs)
9328	5.07	472	3.67	341
<b>Type of traits</b>	<b>Frame</b>	<b>Legs</b>	<b>Udder</b>	<b>Total</b>
EBV	101	109	92	-
Classific	86	89	85	88



LINEAR	-2	-1	0	1	2
Stature					1.0T
Strength					0.1S
Dairy Form					0.4T
Rump Angle					0.4H
Rump Width					0.7W
Rear Legs					0.3P
Foot Angle					0.1L
Fore Udder Attachment					0.1S
Rear Udder Height					0.3H
Rear Udder Width					1.9N
Udder Cleft					0.2S
Udder Depth					1.1S
Teat Placement					0.9W
Teat Length					0.4S
Rear Teat Placement Rear View					0
Rear Teat Placement Side View					0



## JY-40140 BOVI-DENMARK

SIRE NAME	VJ Lure	DAM NAME	019365-02833
PGD	Rynkeby Impuls Stjerne 2	MGD	019365-02663
PCS	DJ Lirsk	MGS	DJ jason

### EBV IN KGS BASED ON 2005 RECORD

Milk	Fat	Protein	Rel
457	59	39	97
<b>Feeding Efficiency</b>	<b>Productive Life</b>	<b>SCS</b>	<b>Beta Casein</b>
-	+3.1	2.89	-
<b>DPR</b>	<b>HCR</b>	<b>CCR</b>	<b>Fertility Index</b>
+1.2	+1.1	+2.2	-

### DAM'S BEST LACTATION DETAILS

Milk yield (Kg)	Avg Milk fat (%)	Total Milk fat(Kgs)	Avg Milk Protein (%)	Total Milk Protein (kgs)
9197	5.7	524	4.04	380
<b>Type of traits</b>	<b>Frame</b>	<b>Legs</b>	<b>Udder</b>	<b>Total</b>
EBV	88	114	107	-
Classific	81	85	87	87

LINEAR	-2	-1	0	1	2
Stature					1.0S
Strength					0.6F
Dairy Form					0.4T
Rump Angle					2.1S
Rump Width					0.9N
Rear Legs					0.0S
Foot Angle					0.2S
Fore Udder Attachment					1.2L
Rear Udder Height					0.1L
Rear Udder Width					1.5N
Udder Cleft					0.5S
Udder Depth					0.2S
Teat Placement					0.3C
Teat Length					0.0L
Rear Teat Placement Rear View					0
Rear Teat Placement Side View					0

# HF-40148 BOVI-DENMARK

SIRE NAME	VJ Drostrupgaard Link Lutz	DAM NAME	059551-04315
PGD	Drostrup May Marie	MGD	059551-03700
PGS	VJ Link	MGS	DJ Hulk

### EBV IN KGS BASED ON 2005 RECORD

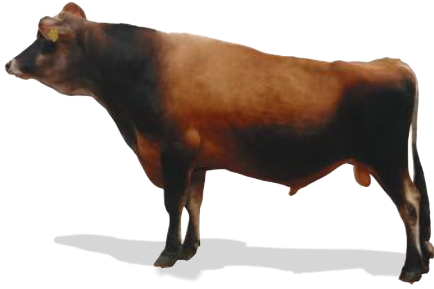
Milk	Fat	Protein	Rel
324	24	21	-
<b>Feeding Efficiency</b>	<b>Productive Life</b>	<b>SCS</b>	<b>Beta Casein</b>
-	-	-	A2A2
<b>DPR</b>	<b>HCR</b>	<b>CCR</b>	<b>Fertility Index</b>
-	-	-	-

### DAM'S BEST LACTATION DETAILS

Milk yield (Kg)	Avg Milk fat (%)	Total Milk fat(Kgs)	Avg Milk Protein (%)	Total Milk Protein (kgs)
8830	5.86	517	3.99	352
<b>Type of traits</b>	<b>Frame</b>	<b>Legs</b>	<b>Udder</b>	<b>Total</b>
EBV	111	104	113	-
Classific	81	79	78	79



LINEAR			
Stature			113
Dairyness			102
Chest			101
Body Depth			83
Rump Width			84
Rump Angle			105
Top Line			108
Legs Rear Side			82
Legs Rear View			108
Foot Angle			117
Bone Quality			108
Hock Quality			103
Fore Udder			105
Rear Udder Height			108
Rear Udder Width			103
Suspensory			99
Udder Depth			122
Udder Balance			102
Teat Length			102
Teat Thickness			105
Teat Front			99
Teat Rear			103



# HF-40139 BOVI-DENMARK

SIRE NAME	VJ Himp	DAM NAME	Heden May Lisa
PGD	045171-02323	MGD	Heden Hirse Ida
PGS	DJ Hovborg	MGS	DJ May

### EBV IN KGS BASED ON 2005 RECORD

Milk	Fat	Protein	Rel
765	54	35	97
<b>Feeding Efficiency</b>	<b>Productive Life</b>	<b>SCS</b>	<b>Beta Casein</b>
-	-	-	A2A2
<b>DPR</b>	<b>HCR</b>	<b>CCR</b>	<b>Fertility Index</b>
-	-	-	-

### DAM'S BEST LACTATION DETAILS

Milk yield (Kg)	Avg Milk fat (%)	Total Milk fat(Kgs)	Avg Milk Protein (%)	Total Milk Protein (kgs)
8280	6.03	499	4.19	347
<b>Type of traits</b>	<b>Frame</b>	<b>Legs</b>	<b>Udder</b>	<b>Total</b>
EBV	108	101	103	-
Classific	86	75	85	83

LINEAR			
Stature			104
Dairyness			120
Chest			105
Body Depth			128
Rump Width			110
Rump Angle			115
Top Line			109
Legs Rear Side			96
Legs Rear View			112
Foot Angle			100
Bone Quality			90
Hock Quality			107
Fore Udder			92
Rear Udder Height			103
Rear Udder Width			109
Suspensory			100
Udder Depth			80
Udder Balance			103
Teat Length			115
Teat Thickness			105
Teat Front			100
Teat Rear			107

# HF 50066 BOVI-DENMARK

SIRE NAME	VJ Jern	DAM NAME	053448-02731
PGD	Adelgaard Hirse Liva	MGD	Adelgaard Hirse Hope
PGS	DJ Jason	MGS	DJ Lix

### EBV IN KGS BASED ON 2005 RECORD

Milk	Fat	Protein	Rel
1035	58	50	93
<b>Feeding Efficiency</b>	<b>Productive Life</b>	<b>SCS</b>	<b>Beta Casein</b>
-	2.8	2.86	A2A2
<b>DPR</b>	<b>HCR</b>	<b>CCR</b>	<b>Fertility Index</b>
0.3	2.7	2.8	-

### DAM'S BEST LACTATION DETAILS

Milk yield (Kg)	Avg Milk fat (%)	Total Milk fat(Kgs)	Avg Milk Protein (%)	Total Milk Protein (kgs)
8129	6.33	514	3.87	314
<b>Type of traits</b>	<b>Frame</b>	<b>Legs</b>	<b>Udder</b>	<b>Total</b>
EBV	90	88	107	-
Classific	81	73	87	82



LINEAR			
Stature			+0.30 T
Strength			+0.40 S
Dairy Form			-0.30 T
Rump Angle			-0.70 H
Rump Width			+0.50 W
Rear Legs			-0.40 P
Foot Angle			+0.30 S
Fore Udder Attachment			-0.60 L
Rear Udder Height			-0.20 L
Rear Udder Width			-0.20 N
Udder Cleft			-0.20 W
Udder Depth			-0.90 D
Teat Placement			-1.20 W
Teat Length			+0.20 L
Rear Teat Placement Rear View			+0.10 C
Rear Teat Placement Side View			-0.30 C